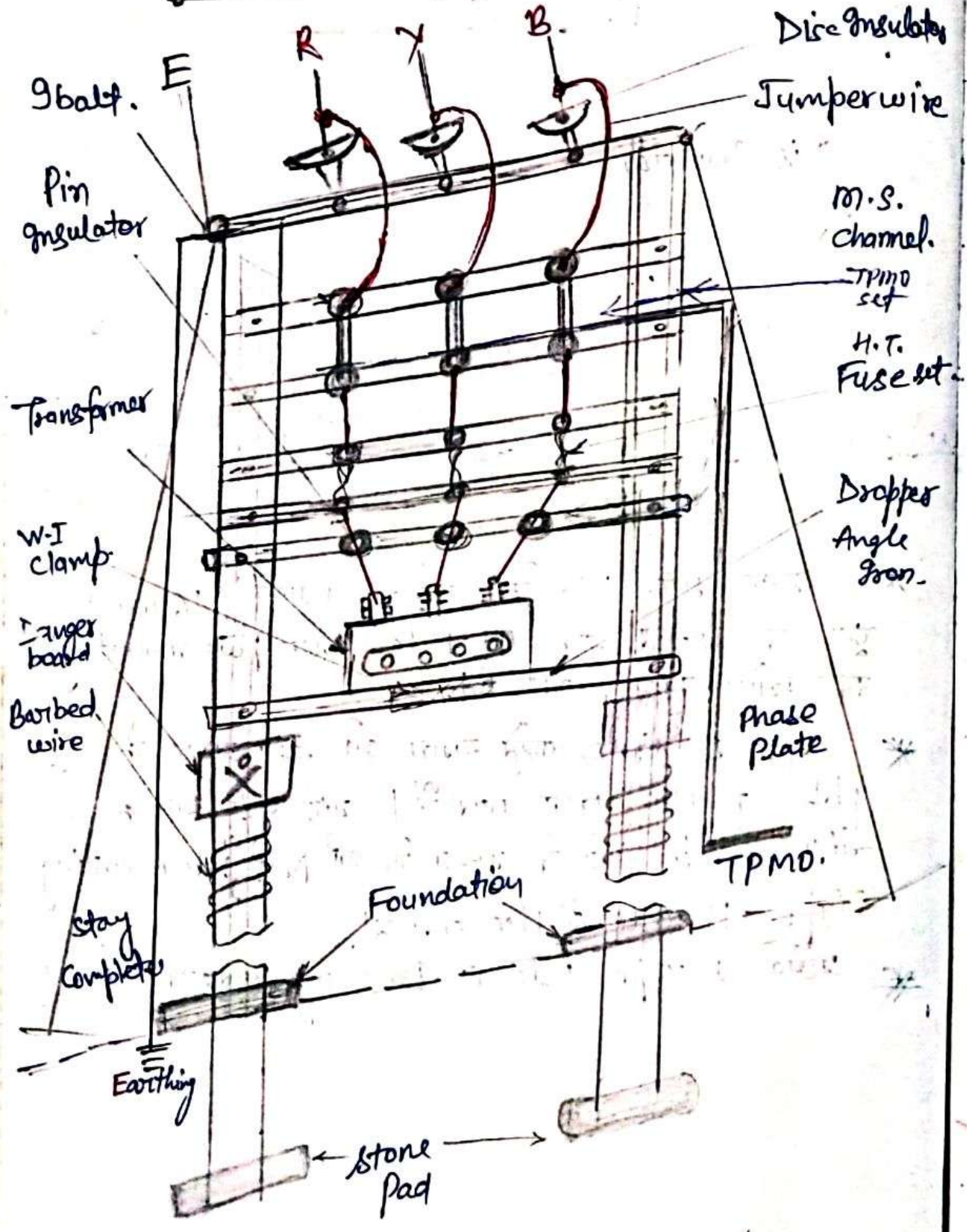
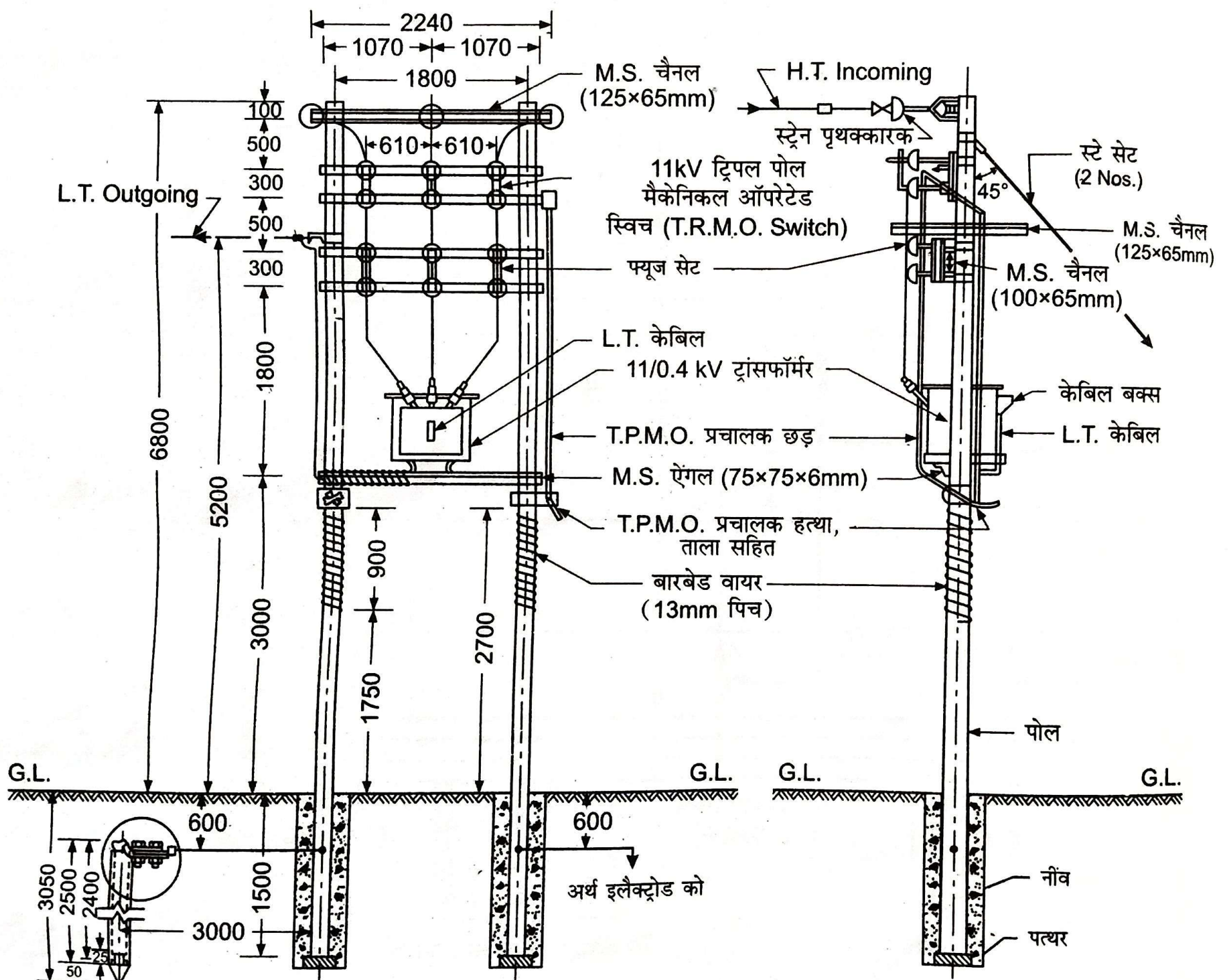


(iv) H POLE with Pole mounting



Note:- If the rating of the transformer above 50KVA, the lightning Arrester is required.



(a) साइड व्यू (Side view)

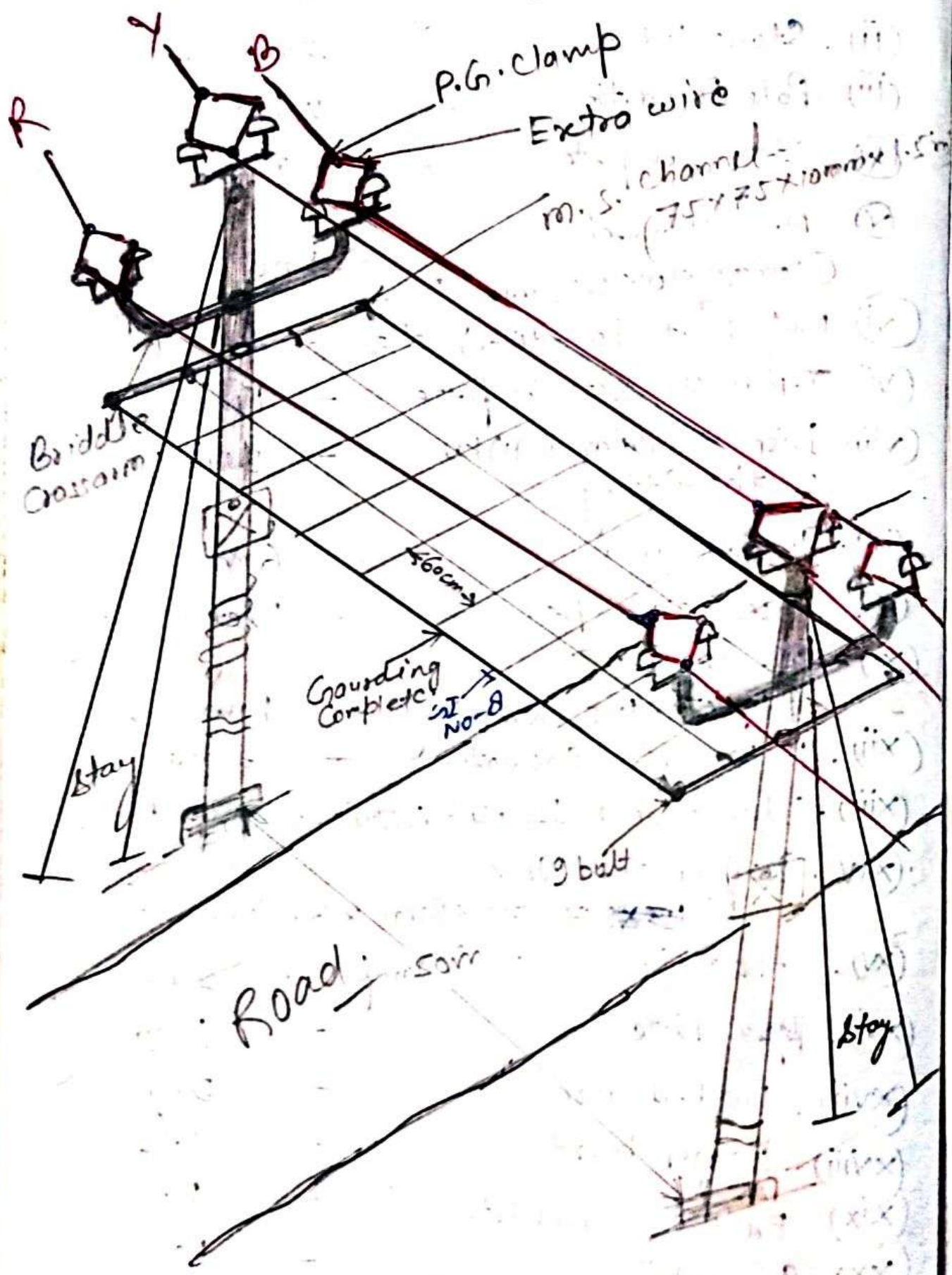
(b) फ्रंट व्यू (Front view)

Material :-

(27)

- (i) Rail Pole - 11.5 m long - 2 no.
- (ii) Stone pad - 2 no.
- (iii) Pole Foundation - 2 no.
- (iv) Stay Complete - 2 no.
- (v) M.S. Channel
(100x50x10x2.65 mm long) - 1 no.
- (vi) Nut bolt For different size - 2 kg
- (vii) T.P.M.O. Set Complete - 1 No.
- (viii) Disc Insulator (11) KV
with fitting. - 3 No
- (ix) Jumper wire - 6 m.
- (x) Fuse Set Complete - 1 set.
- (xi) M.S. Channel
(100x50x10 mm x 2 m long) - 1 no
- (xii) 11 KV Pin Insulator - 3 no.
- (xiii) Transformer 11/0.4 KV, 50HZ, 2.5 KVA - 1
- (xiv) Dropper angle iron
(~~75x75~~ 75x75 x 8 mm x 2 m long) - 1
- (xv) W.I (wrought iron) clamp - 2 no.
- (xvi) Base Plate
Phase - 1 no.
- (xvii) Barbed wire - 5 kg
- (xviii) Danger board - 1 no
- (xix) Earthing Complete - 1
- (xx) g bolt - 1 no
- (xxi) Painting of Pole - 1 no.

(V) For Road Crossing



(Road crossing)

Material Required for Road Crossing:-

- * Pole RCC - 2
- * Stone Pad - 2
- * Pole foundation - 2
- * Stay Complete - 4
- * Bridle cross arm - 2
- * D clamp - 2
- * 11kV pin insulator - 12
- * P.G. clamp - 12
- * Jumper wire - 12m.
- * Binding wire - 1kg
- * Phase plate - 2
- * Danger board - 2
- * Barbed wire - 4kg
- * Grounding Complete For road Crossing - L.S. ₹ 5000/-
- * Earthing Complete - 1
- * g bolt - 2

Note - * Road crossing के Case में
 दो पोलो के बीच का span som
 ही मिया जाता है।

* कोई एक pole earth किया जाता है।

* Supply line के चालक के नीचे Grounding
 लगायी जाती है।